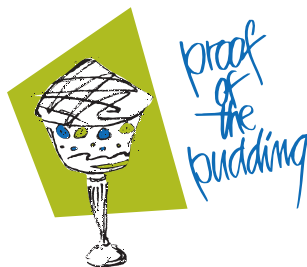




# Your Break Time Catering Menu



**Please take the time to familiarize yourself with our policies.**

Proof of the Pudding has the exclusive catering contract with the Gwinnett Center and sole distribution rights of food and beverage within the facility and grounds.

## **MENUS**

Menu selection and other details pertinent to your function should be submitted to the catering department at least one month prior to the function date. The Catering Sales Manager handling your event will assist you in selecting the proper menu items and arrangements to ensure a successful event. Because every event varies in purpose, detail and budget, we are happy to offer custom menu planning to meet your particular needs or theme.

## **GUARANTEES**

A guaranteed number of attendees are required three (3) business days, before the date and time of the function (a business day is defined as Monday-Friday.) If the final guarantee is not received as stated, Proof of the Pudding reserves the right to charge for the number of persons specified on the contract. The guarantee is not subject to reduction after the guarantee deadline. We will over set by 5% or up to 50 people for your event. Actual over set number to be determined based on guarantee and discussion with Catering Sales Manager.

## **PRICING**

Prices quoted do not include 20% Service Charge or 6% Sales Tax unless otherwise noted. Due to market fluctuations, prices are subject to change up to 60 days before the Event at which time confirmed prices may be quoted. The following prices are effective as of May 1, 2011.

## **LABOR CHARGES**

Additional servers may be requested over and above our normal staffing minimum for your event. The charge is 25.00 per hour, per server, with a four-hour minimum. Charges for specialized services such as carvers, chefs, bartenders and cashiers are noted on the menus.

## **CONTRACTS & DEPOSITS**

An initial non-refundable deposit in the amount noted on the addendum is due with a signed copy of the contract. When contracts are issued within 14 days of the event, we require 100% prepayment and execution of the contract. The signed contract, stated terms, addendums and specific banquet event orders constitute the entire agreement between the client and Proof of the Pudding.

## **BANQUET EVENT ORDER & PAYMENT**

A signed copy of the banquet event order (BEO) outlining catering and event function requests must be returned to Proof of the Pudding 14 days before the event, along with your full payment. Your final guarantee is due three (3) business days before your function. Accepted methods of payments are cash, certified check, credit card and company check.

## **CANCELLATION**

Cancellation of contracted services must be made in writing. If cancellation occurs after the contract is signed, all advance and all amounts paid as partial payment by Lessee are non-refundable. If the event is cancelled less than two weeks to 72 hours prior to the event, a fee of 50% of the total estimated services will be charged. Any event cancelled less than 72 hours prior to the event will incur 100% of the estimated charges.

If an event is cancelled with the mutual consent of Proof of the Pudding and client due to inclement weather or other mitigating circumstances, only the actual expenses of food and labor incurred by Proof of the Pudding during preparation will be charged.

## **HOLIDAY BUSINESS**

Due to the demand of catering service during the holiday season, our deposit and contract policy is modified for this special time of the year. The Catering Sales Manager will discuss contract and deposit policies for the holiday season with you.

## **FOOD LIABILITY**

Proof of the Pudding is responsible for the quality and freshness of its food. Due to the current health regulations, food may not be taken off premises after it has been prepared and served. However, as a participant with the Atlanta Community Food Bank, excess prepared food (not served) is donated to Atlanta's Table under regulated conditions and distributed to agencies feeding the needy.

## **BEVERAGE SERVICE**

We offer a complete selection of beverages to complement your function. Please note that the State Liquor Control Board regulates alcoholic beverages and service. Proof of the Pudding, as licensee, is responsible for the administration of the regulations.

- No alcoholic beverages may be brought onto the premises from outside sources.
- We reserve the right to refuse alcoholic service to intoxicated or underage persons.
- No alcoholic beverages can be removed from the premises



## *a la carte selections*

### **BEVERAGES**

- Coffee, Decaffeinated Coffee or Specialty Teas 36.95 per gallon
- Orange, Apple, Cranberry or Grapefruit Juice 28.95 per gallon
- Individual Assorted Juice Bottles 3.95 per bottle
- Signature Punch or Lemonade 28.95 per gallon
- Sweet Iced Tea or Unsweetened Iced Tea 32.95 per gallon
- Soft Drinks 2.75 per can
- Bottled Water 2.75 per bottle
- Individual Whole Milk, Skim or 2% Milk 2.95 per bottle
- Hot Chocolate or Apple Cider (packets) 36.95 per gallon

### **BREAKFAST ITEMS** (Per Person)

- Assorted Breakfast Bakeries 2.95
- Muffins, Danish Pastries, Bear Claws, Fruit & Chocolate 3.25
- Filled Croissants or Bagels with Flavored Cream Cheese 3.25
- Chicken Biscuits 3.75
- Sausage Biscuits 3.75
- Ham Biscuits 3.75
- Ham and Cheese on a Flaky Croissant 3.75

- Ham, Egg and Cheese on a Flaky Croissant 3.95
- Individual Cereals with Milk; Whole, Skim or 2% 3.00
- Individual Fruit Yogurts 3.00

### **SNACKS** (by Dozen)

- Assorted Fresh Baked Cookies 2.50
- Assorted Gourmet Brownies 2.50
- Assorted Tea Cookies 2.75
- Warm Soft Pretzels with Mustard 2.75
- Sliced Seasonal Fruit and Berries 3.75
- Whole Fresh Fruit 1.75
- Assorted Granola Bars 2.25
- Tortilla Chips and Salsa 2.75
- Individual Snack Bags: Potato Chips, Corn Chips, Pretzels, Popcorn 2.25
- Just Snacks: Mixed Nuts, Chex Mix, Pretzels and Chips 5.95
- Mixed Nuts 3.00
- Assorted Ice Cream Treats 3.95
- Assorted Miniature Candy Bars 2.95





## *let's take a break a la carte*

### **QUENCH YOUR THIRST**

Freshly Brewed Coffee  
Decaffeinated Coffee  
Specialty Teas  
Assorted Soft Drinks  
Bottled Water  
8.95 per person  
Add Donuts for 2.95 per person

### **THE SUGAR FIX**

Assorted Cookies & Brownies  
Assorted Candy Jars...  
M&M's, Jellybeans,  
Gummy Bears, etc.  
Assorted Soft Drinks  
Bottled Water  
12.95 per person

### **HEALTHY ALTERNATIVE**

Assorted Individual Fruit Yogurts  
Seasonal Fruits & Berries  
Assorted Granola Bars  
Individual Assorted Juice Bottles  
Assorted Soft Drinks  
Bottled Water  
12.95 per person

### **VERY BERRY BREAK**

Seasonal Fruits & Berries  
Freshly Brewed Coffee,  
Decaffeinated Coffee  
and Specialty Teas,  
Assorted Soft Drinks  
Bottled Water  
10.95 per person

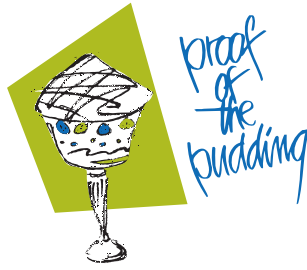
### **THE COOL DOWN**

Individual Ice Cream Treats...  
Cones, Cups, Sandwiches,  
Bars, Popsicles, etc.  
Assorted Soft Drinks  
Bottled Water  
12.95 per person

### **THE ALL AMERICAN**

Roasted Peanuts  
Popcorn  
Bags of Chips  
Cracker Jacks  
Assorted Cookies  
Assorted Soft Drinks  
Bottled Water  
12.95 per person





## let's take a break package 25.95 per person

### TO BEGIN...

A Selection of Two Juices: Orange, Apple, Cranberry or Grapefruit

Sliced Seasonal Fruit and Berries

A Selection of Proof's Fresh Baked Breakfast Bakeries: Danish, Pastries, Fruit and Chocolate Filled Croissants, Bear Claws, Muffins and Bagels served with Whipped Butter, Flavored Cream Cheeses & Assorted Jams

Individual Cold Cereal with 2% Milk or Whole Milk (Skim Milk upon request)

Freshly Brewed Coffee, Decaffeinated Coffee and Specialty Teas

Assorted Soft Drinks and Bottled Water

### MID MORNING...

Freshly Brewed Coffee, Decaffeinated Coffee and Specialty Teas

Assorted Soft Drinks and Bottled Water

### MID AFTERNOON...

Select One of the Following:

#### THE ALL AMERICAN

Roasted Peanuts

Popcorn

Bags of Chips

Cracker Jacks

Assorted Cookies

Assorted Soft Drinks

Bottled Water

#### HEALTHY ALTERNATIVE

Assorted Individual Fruit Yogurts

Seasonal Fruits & Berries

Assorted Granola Bars

Individual Assorted Fruit Juice Bottles

Assorted Soft Drinks

Bottled Water

#### THE SUGAR FIX

Assorted Cookies &

Brownies

Assorted Candy Bars...

M&M's, Jellybeans,

Gummy Bears, etc.

Assorted Soft Drinks

Bottled Water

#### THE COOL DOWN

Individual Ice Cream Treats: Cones, Cups, Sandwiches, Bars, Popsicle, etc.

Assorted Soft Drinks

Bottled Water

To Begin Break Service for 60 minutes, Mid Morning and Mid Afternoon Break Service for 30 minutes each and includes Fresh Brewed Coffee and Decaffeinated Coffee. If additional beverages are requested between each break service, cost will be based upon consumption.

